

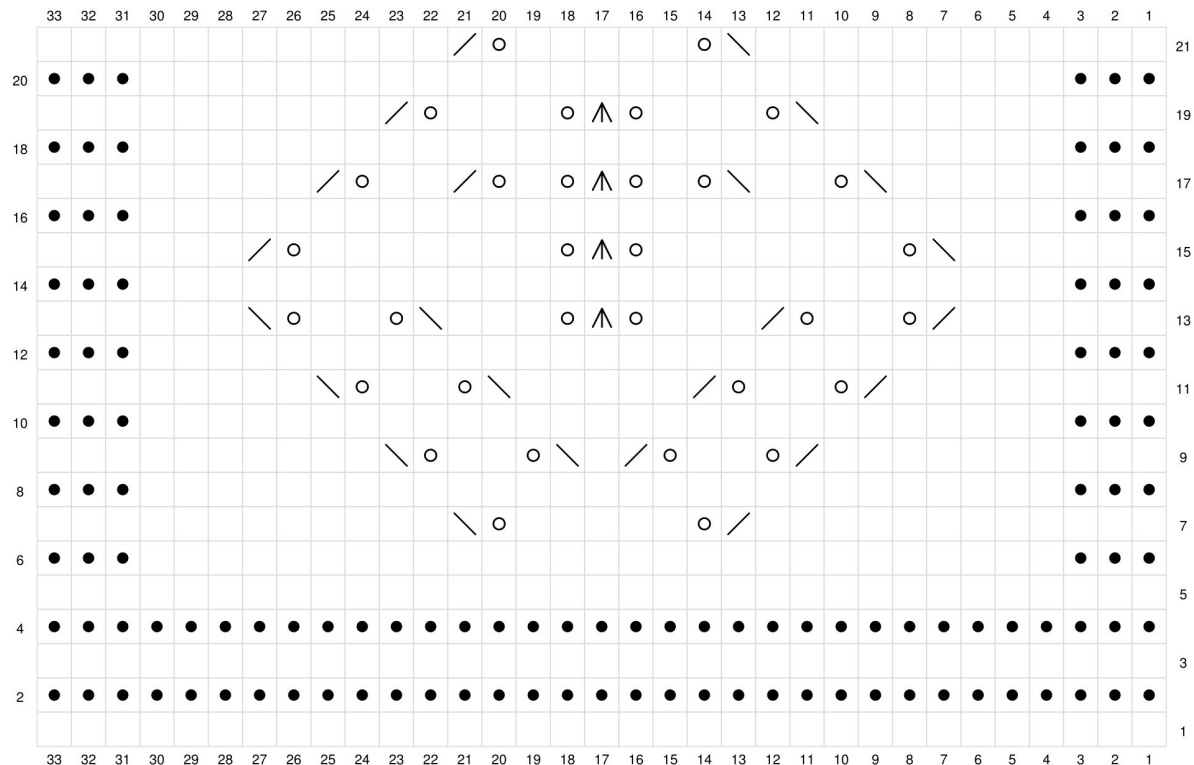
Advanced Knit Fixes

Pre-Class Homework



Swatch 1: Cast on 30 stitches and knit 4 inches in stockinette stitch, working flat. Leave stitches live on the needles.

Swatch 2: Lace Swatch In advance of class, please complete this lace chart. Leave the stitches on the needle and do not bind off. If you prefer to work from written instructions, they are provided on the next page.



RS: Knit
WS: Purl

RS: Purl
WS: Knit

SSK

Knit 2 together

Central double decrease: Slip the next two stitches from the left needle to the right as if to knit 2 together, knit the next st, pass the two slipped stitches over.

Yarn over

CO 33 sts

Row 1 [RS]: k33

Row 2 [WS]: k33

Row 3 [RS]: k33

Row 4 [WS]: k33

Row 5 [RS]: k33

Row 6 [WS]: k3, p27, k3

Row 7 [RS]: k12, (k2tog), yo, k5, yo, ssk, k12

Row 8 [WS]: k3, p27, k3

Row 9 [RS]: k10, (k2tog), yo, k2, yo, (k2tog), k, ssk, yo, k2, yo, ssk, k10

Row 10 [WS]: k3, p27, k3

Row 11 [RS]: k8, (k2tog), yo, k2, yo, (k2tog), k5, ssk, yo, k2, yo, ssk, k8

Row 12 [WS]: k3, p27, k3

Row 13 [RS]: k6, (k2tog), yo, k2, yo, (k2tog), k3, yo, cdd, yo, k3, ssk, yo, k2, yo, ssk, k6

Row 14 [WS]: k3, p27, k3

Row 15 [RS]: k6, ssk, yo, k7, yo, cdd, yo, k7, yo, (k2tog), k6

Row 16 [WS]: k3, p27, k3

Row 17 [RS]: k8, ssk, yo, k2, ssk, yo, k, yo, cdd, yo, k, yo, (k2tog), k2, yo, (k2tog), k8

Row 18 [WS]: k3, p27, k3

Row 19 [RS]: k10, ssk, yo, k3, yo, cdd, yo, k3, yo, (k2tog), k10

Row 20 [WS]: k3, p27, k3

Row 21 [RS]: k12, ssk, yo, k5, yo, (k2tog), k12

Swatch 3: Cable Swatch For your final swatch, knit this cable swatch, following either the written instructions or the chart on the next page, paying close attention to the direction of the cable crosses. Leave the stitches on the needle and do not bind off.

Row 1 [RS]: k34

Row 2 [WS]: k34

Row 3 [RS]: k34

Row 4 [WS]: k34

Row 5 [RS]: k3, p4, k4, p4, k4, p4, k4, p4, k3

Row 6 [WS]: k7, p4, k4, p4, k4, p4, k7

Row 7 [RS]: k3, p4, k4, p4, k4, p4, k4, p4, k3

Row 8 [WS]: k7, p4, k4, p4, k4, p4, k7

Row 9 [RS]: k3, p4, (2/2 left cable), p4, k4, p4, (2/2 right cable), p4, k3

Row 10 [WS]: k7, p4, k4, p4, k4, p4, k7

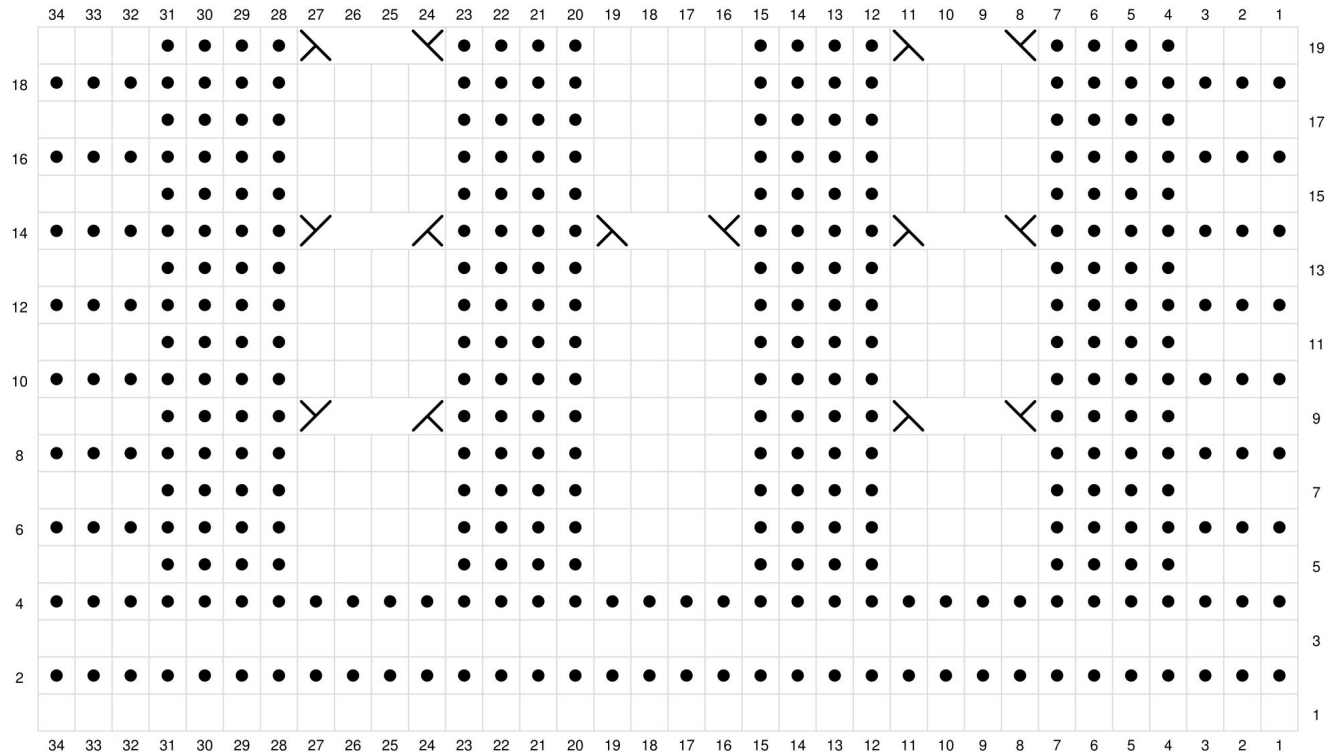
Row 11 [RS]: k3, p4, k4, p4, k4, p4, k4, p4, k3





Row 12 [WS]: k7, p4, k4, p4, k4, p4, k7

Row 13 [RS]: k3, p4, k4, p4, k4, p4, k4, p4, k3

Row 14 [WS]: k7, (2/2 right cable), k4, (2/2 left cable), k4, (2/2 left cable), k7

Row 15 [RS]: k3, p4, k4, p4, k4, p4, k4, p4, k3
 Row 16 [WS]: k7, p4, k4, p4, k4, p4, k7
 Row 17 [RS]: k3, p4, k4, p4, k4, p4, k4, p4, k3
 Row 18 [WS]: k7, p4, k4, p4, k4, p4, k7
 Row 19 [RS]: k3, p4, (2/2 left cable), p4, k4, p4, (2/2 left cable), p4, k3



 RS: Knit
 WS: Purl
 RS: Purl
 WS: Knit
 2/2 left cable
 2/2 right cable