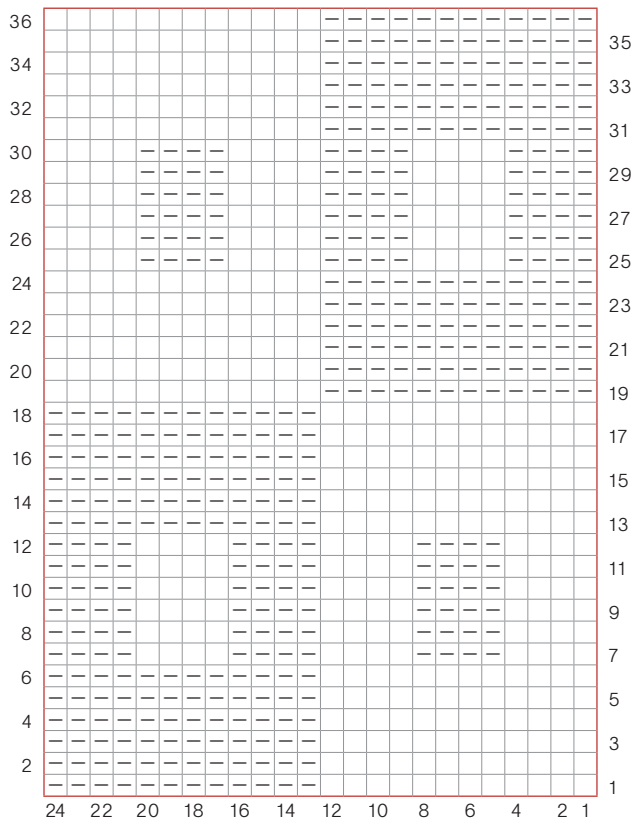


SWATCH #3



Cast on 52 (6x8=48, plus 4 for the selvedge)
 Rows 1–6: k2, [k12, p12], yFs2.
 Rows 7–12: k2, [k4, p4], yFs2.
 Rows 13–18: k2, [k12, p12], yFs2. (rep rows 1–6)
 Rows 19–24: k2, [p12, k12], yFs2.
 Rows 25–30: k2, [p4, k4], yFs2.
 Rows 31–36: k2, [p12, k12], yFs2. (rep rows 19–24)